

PE Features

- Standard 3/8 in. diameter mounting stem
- Compact design
- Linear ranges from 1 in. to 2 in.
- 120 CPI to 2,000 CPI
- 0.0005 in. to 0.0021 in. resolution
- latching connector
- A and B quadrature digital output
- Optional 3rd channel (index)
- TTL compatible outputs
- Interfaces with all US Digital® support products



The PE is no longer available for purchase.

PE Product Description

The PE series linear plunger-style optical encoder has a machined aluminum enclosure. The PE provides either single-ended or differential quadrature encoder output in a convenient mechanical package. Various CPI (counts per inch) ranging from 120 CPI to 2000 CPI are available. Using x4 quadrature counting, the available resolutions range from 0.00013 in. to 0.0021 in. Note that 127 CPI gives a resolution of 50 micrometers.

The PE features smooth linear bearings for repeatable measurements and an internal spring to return the plunger to its fully extended position. Standard linear measurement ranges are from 1 to 2 inches. The precision plunger has #4-48 threads on both ends to accept industry-standard contact points. The PE may be mounted four different ways: the #4-40 clearance body through holes, the #4-40 tapped blind holes, the standard 3/8 in. diameter mounting stem, or the lug back option.

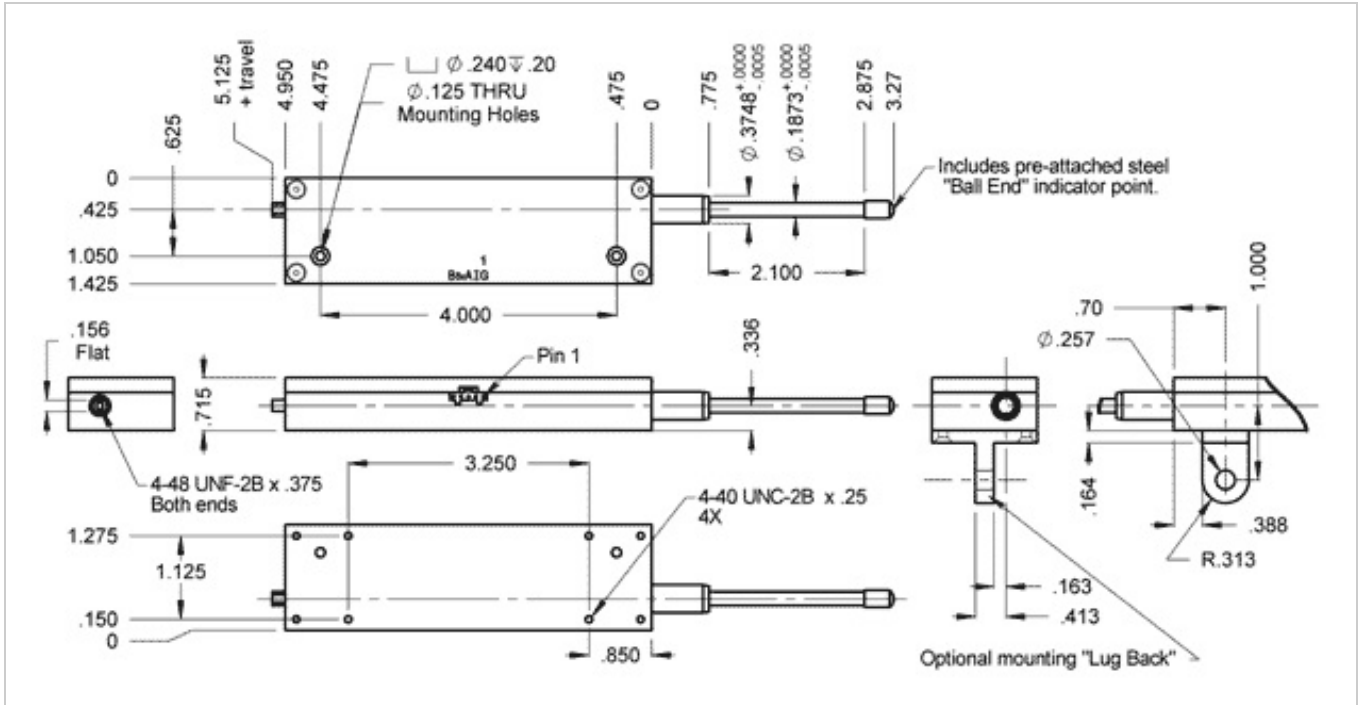
The single-ended output interface is normally designed for applications of 10 feet or less. For longer cable lengths, the differential output interface is recommended.

The internal encoder module incorporates a lensed LED light source and a monolithic photodetector array. The monolithic photodetector has signal shaping electronics that produce a two-channel quadrature with optional index bounceless TTL output. When Index is specified, the default location is in the middle of the linear probe's range of travel with a location tolerance of ± 0.050 in.

For differential versions: the internal differential line driver (26C31) can source and sink 20mA at TTL levels. The recommended receiver is industry standard 26C32. Maximum noise immunity is achieved when the differential receiver is terminated with a 150 Ω resistor in series with a .0047 μ F capacitor placed across each differential pair. The capacitor simply conserves power; otherwise, power consumption would increase by approximately 20 mA per pair or 40 mA for 2 pairs.

A secure connection to the PE encoder is made through a 5-pin (single-ended versions) or 10-pin (differential versions) polarized connector (sold separately). The mating connectors are available from US Digital with several cable options and lengths.

Mechanical Drawings



Specifications

ENVIRONMENTAL

The PE performs best over a 0 C to 50 C temperature range due to a fairly linear temperature coefficient. They will however, operate at temperatures above 50C, but the thermal temperature coefficient becomes non linear at elevated temperatures. The negative temperature coefficient indicates the actual measured distance will decrease slightly with temperature increase.

PARAMETER	SPECIFICATION
Recommended Operating Temperature	0 C to 50 C
1" Product Temperature Coefficient	-0.000036 in/C
2" Product Temperature Coefficient	-0.000075 in/C
Operating Temperature, CPI < 1000	-40 to 100 C
Operating Temperature, CPI ≥ 1000	-25 to 100 C
Vibration (5 Hz to 2000 Hz)	20 G
Electrostatic Discharge	± 4 kV Human Body Model



MECHANICAL

PARAMETER	DIMENSION	UNITS
Plunger Force (1" version)	3 to 6 typical	oz.
Plunger Force (2" version)	3 to 9 typical	oz.
Travel (1" version)	1.050 min.	in.
Travel (2" version)	2.050 min.	in.
Side Load	1	lb.

- When Index is specified, the default location is in the middle of the linear probe's range of travel with a location tolerance of $\pm 0.050"$.

PHASE RELATIONSHIP

A leads B for inward plunger motion, and B leads A for outward plunger motion (see *the EM1* (<https://www.usdigital.com/products/encoders/incremental/modules/em1/>) or *EM2* (<https://www.usdigital.com/products/encoders/incremental/modules/em2/>) pages).

TRACKING SPEED

The maximum tracking speed of the encoder can be calculated as follows:

Maximum tracking speed (in. / sec.) = 300000/CPI. Where CPI is the counts-per-inch of the encoder.

The tracking speed for several common CPI's are shown in the table below.

PARAMETER	MAX.	UNITS
Tracking Speed, 125 CPI	800	in/sec
Tracking Speed, 127 CPI	787	in/sec
Tracking Speed, 250 CPI	400	in/sec
Tracking Speed, 500 CPI	200	in/sec
Tracking Speed, 1000 CPI	360	in/sec
Tracking Speed, 2000 CPI	360	in/sec

RESOLUTIONS

The position resolution in inches using x4 quadrature counting (count every transition of the A and B outputs) can be calculated as follows:

Resolution = $1/(4 \times \text{CPI})$ where CPI is the counts-per-inch of the encoder. Several common values are shown in the table below.

CPI	RESOLUTION
125	0.002 in.
127	50.0 μm
250	0.0010 in.
500	0.0005 in.
1000	0.00025 in.
2000	0.000125 in.

Other resolutions may be available upon request.

SINGLE-ENDED ELECTRICAL

- Specifications apply over entire operating temperature range.
- Typical values are specified at $V_{CC} = 5.0\text{Vdc}$ and 25°C .
- For complete details, see the EM1 (<https://www.usdigital.com/products/em1/>) or EM2 (<https://www.usdigital.com/products/em2/>) product pages.

PARAMETER	MIN.	TYP.	MAX.	UNITS	CONDITIONS
Supply Voltage	4.5	5.0	5.5	V	
Supply Current		27	33	mA	CPI < 300, no load
		55	62	mA	CPI \geq 300, no load
Low-level Output			0.5	V	$I_{OL} = 8\text{mA max.}$
High-level Output	2.0			V	$I_{OH} = -8\text{mA max.}$
	4.2	4.8		V	no load
Output Current Per Channel	-8		8	mA	
Output Rise Time		110		nS	
Output Fall Time		35		nS	

DIFFERENTIAL ELECTRICAL

- Specifications apply over entire operating temperature range.
- Typical values are specified at $V_{cc} = 5.0V_{dc}$ and $25^{\circ}C$.
- For complete details, see the EM1 (<https://www.usdigital.com/products/em1/>) product page.

PARAMETER	MIN.	TYP.	MAX.	UNITS	CONDITIONS
Supply Voltage	4.5	5.0	5.5	V	
Supply Current		29	36	mA	CPI < 300, no load
		57	65	mA	CPI \geq 300, no load
Low-level Output		0.2	0.4	V	$I_{OL} = 20mA$ max.
High-level Output	2.4	3.4		V	$I_{OH} = -20mA$ max.
Differential Output Rise/Fall Time			15	nS	

PIN-OUT

5-PIN SINGLE-ENDED:

PIN	DESCRIPTION
1	Ground
2	Index
3	A channel
4	+5VDC power
5	B channel

10-PIN DIFFERENTIAL:



PIN	DESCRIPTION
1	Ground
2	Ground
3	Index-
4	Index+
5	A- channel
6	A+ channel
7	+5VDC power
8	+5VDC power
9	B- channel
10	B+ channel

ACCESSORIES

1. For tapped blind hole mounting:

Part #: SCREW-440-250-PH

Description: #4-40 x 1/4"

Quantity Required for Mounting: 4 per encoder

Part #: SCREW-440-375-PH

Description: #4-40 x 3/8"

Quantity Required for Mounting: 4 per encoder

Part #: SCREW-440-500-PH

Description: #4-40 x 1/2"

Quantity Required for Mounting: 4 per encoder

Part #: SCREW-440-625-PH

Description: #4-40 x 5/8"

Quantity Required for Mounting: 4 per encoder

2. For body through hole mounting:

Part #: SCREW-440-1000-PH

Description: #4-40 x 1"

Quantity Required for Mounting: 2 per encoder

Notes

- Cables and connectors are not included and must be ordered separately.
- For ordering information please see the Compatible Cables / Connectors section above.
- US Digital® warrants its products against defects in materials and workmanship for two years. See complete warranty (<https://www.usdigital.com/company/warranty>) for details.



Configuration Options

PE

PLEASE NOTE: This chart is for informational use only. Certain product configuration combinations are not available. Visit the PE product page (<https://www.usdigital.com/products/PE>) for pricing and additional information.